

12.215 Modern Navigation

**Thomas Herring (tah@mit.edu),
<http://geoweb.mit.edu/~tah/12.215>**

Today's class

- Map Projections:
 - Why projections are needed
 - Types of map projections
 - Classification by type of projection
 - Classification by characteristics of projection
 - Mathematics of map projections

Need for Map Projections

- Basic need is because the Earth's surface is curved and so it is not possible to represent on a flat surface with out some distortions
- Flat surfaces were needed so that people could carry maps with them (still a major use)
- With GPS, maps are now often represented in a computer in 3-D form or as ellipsoidal coordinates thus minimizing the distortion
- The amount of distortion depends on the area to be represented (over small areas the Earth is nearly flat).

10/19/2009

12.215 Lec 11

3

Types of map projections

- Map projections are classified either by way the projection is made and the surface onto which it is projected or by the characteristics of the resultant projected maps.
- Some projection surfaces are planes, cones and cylinders (each of these surfaces can be un-wrapped into a flat surface)
- Some map projections are purely mathematical so that they can minimize distortions.
- We will deal (mathematically) with only projection from a spherical body. Most accurate map projections are projections from an ellipsoidal body.

10/19/2009

12.215 Lec 11

4

Projection by characteristics

- The general characteristics of map projections are given by:
- **Conformality:** When the scale of a map at any point on the map is the same in any direction, the projection is conformal. Meridians (lines of longitude) and parallels (lines of latitude) intersect at right angles. Shape is preserved locally on conformal maps.
- **Distance:** A map is equidistant when it portrays distances from the center of the projection to any other place on the map.
- **Direction:** A map preserves direction when azimuths (angles from a point on a line to another point) are portrayed correctly in all directions.
- **Area:** When a map portrays areas over the entire map so that all mapped areas have the same proportional relationship to the areas on the Earth that they represent, the map is an equal-area map.

10/19/2009

12.215 Lec 11

5

Scale characteristics

- **Scale:** Scale is the relationship between a distance portrayed on a map and the same distance on the Earth.
- A large scale map shows a small area with a large amount of detail (eg. 1:25000)
- A small scale map shows a large area with a small amount of detail (eg. 1:500000)
- The interpretation of the scale is 1:25000 is 1 unit on the map represents 25000 units on the Earth
- On many maps the scale changes across the map.
- Usually the scale is shown graphically somewhere on the map and if the scale varies across the map, the scale should indicate where it is applicable and the changes in scale across the map.

10/19/2009

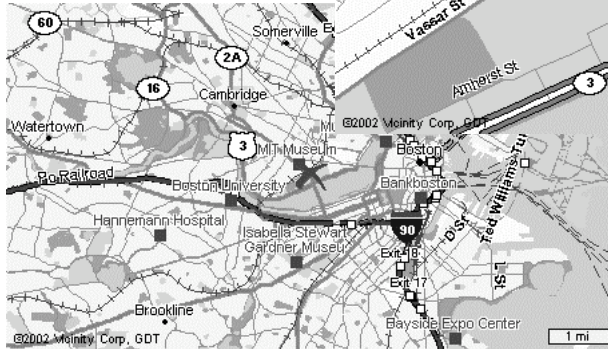
12.215 Lec 11

6

Large/small scale map

Source: <http://www.mapblast.com/>

Small Scale



Large scale

Note: Scale bar in lower left hand corner

10/19/2009

12.215 Lec 11

7

Projection type by surface

- Projections are often referred to by the type of surface that the projection is made on to.
- The three main surfaces are:
 - Plane (often referred to as Azimuthal Projections)
 - Cylindrical (Mercator is probably the most famous)
 - Conic projection
- The characteristics of the map are set by how the surface contacts the Earth (e.g., a Plane may be tangential to the surface or it may cut through the Earth at some depth).

10/19/2009

12.215 Lec 11

8

General characteristics

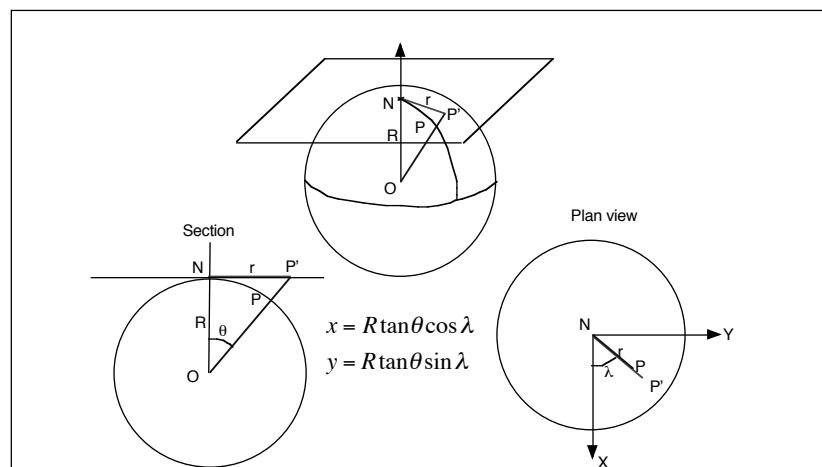
- All projections can be written in a form that allows plane coordinates x and y to be written as functions of ϕ and λ :
 $x = f(\phi, \lambda)$ and $y = g(\phi, \lambda)$.
- The exact forms of the functions f and g depend on the projection. For the geometric projections from a sphere, these can be written as simple trigonometric functions as shown in the next few slides.
- More complicated projections can involve more complicated and sometime approximate formulas especially when ellipsoidal coordinates are projected (such as the Universal Transverse Mercator (UTM) projection which is used for many US maps)
- On many maps UTM coordinates are given (also called grid coordinates) and GPS receivers can normally be set to output and interpret these types of coordinates.

10/19/2009

12.215 Lec 11

9

Plane projection maps



10/19/2009

12.215 Lec 11

10

Conical Projection

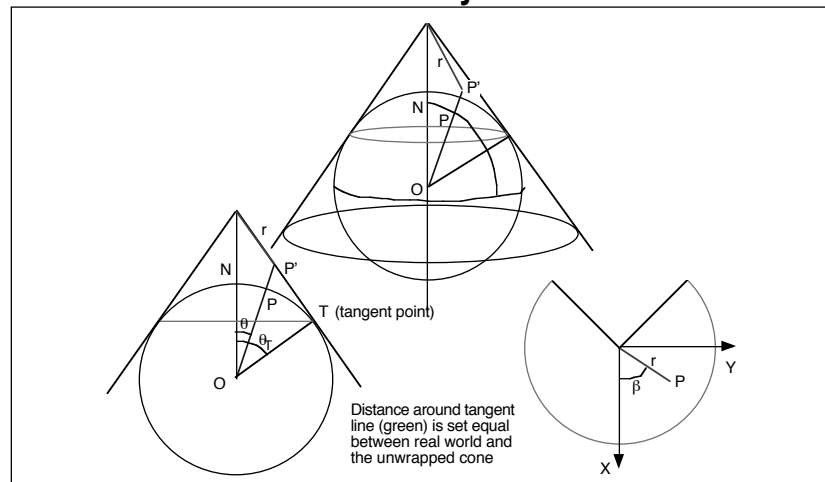
- The equations to solve the conical projection will be set as a homework exercise.
- In a conical projection, points are projected radially onto the cone. The cone is then “cut” and unwrapped to form the projection.
- In the case shown, the cone’s dimensions are set by specifying the co-latitude of the tangent point of the cone (θ_T). The distance around this part of the cone is set equal to the distance around the small circle on the Earth. This allows the relationship between longitude and the angle around the cut cone (β) to be determined.

10/19/2009

12.215 Lec 11

11

Conical Projections

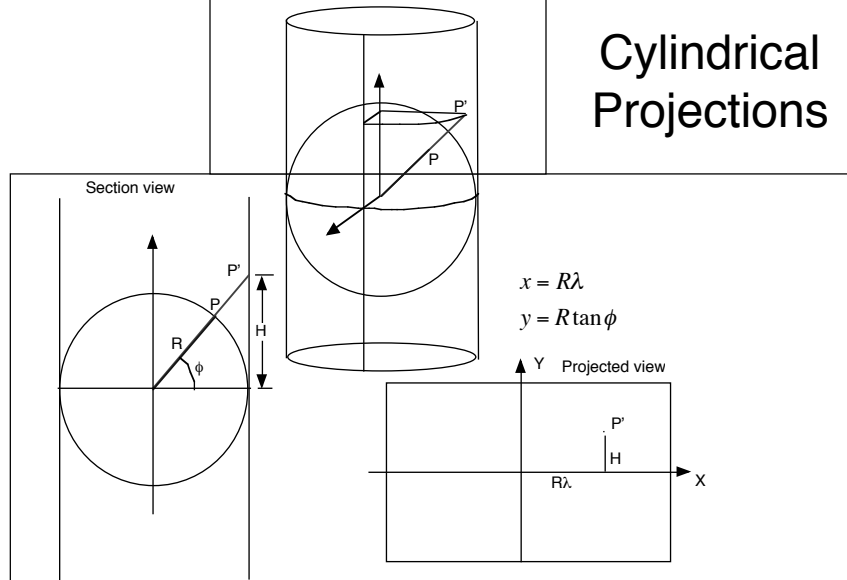


10/19/2009

12.215 Lec 11

12

Cylindrical Projections



10/19/2009

12.215 Lec 11

13

UTM coordinates

- The Universal Transverse Mercator (UTM) projection is most commonly used in the US (and many other mid-latitude to equatorial countries)
- This is an ellipsoidal projection that divides the world into numbered zones in longitude. For the US these zones are:



10/19/2009

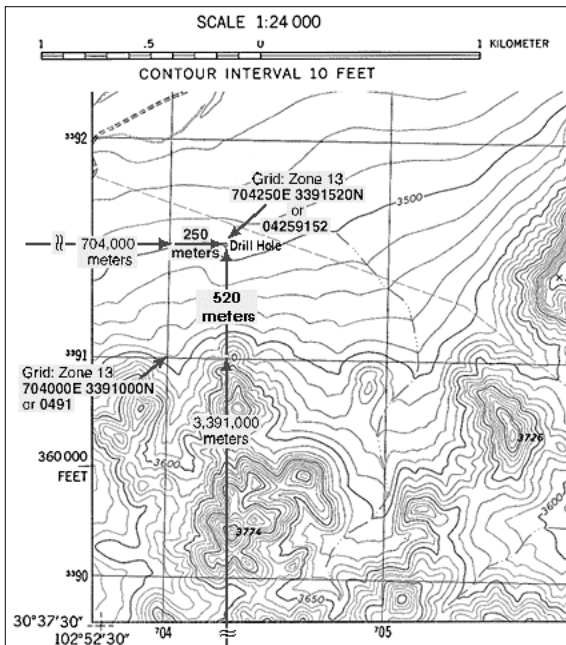
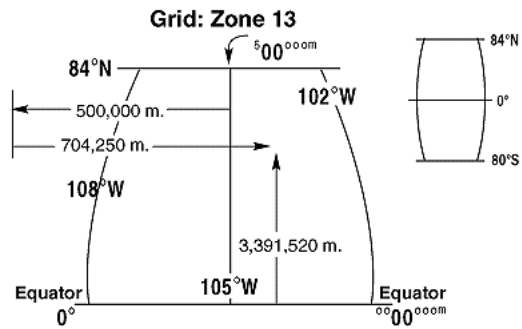
12.215 Lec 11

14

UTM coordinates

- Within each of the zones, the latitude and longitude difference from the central meridian is used to compute the UTM coordinates.

• These coordinates are given as Northing and Easting. (The east coordinates have 500,000 added so that they are not negative west of the central meridian)



Example of using UTM coordinates

Notes that go with previous figure

- UTM coordinate maps usually have notes that describe the projection in more detail
- Details given on datum (NAD-27 in this case)
- More details at <http://www.maptools.com/UsingUTM/>

Scale 1:50,000
(NAD 27)
MCR 1980

Mapped, edited, and published by the Geological Survey

Control by USGS and NOS/NOAA

Topography by photogrammetric methods from aerial photographs taken 1974. Field checked 1975. Map edited 1980

Projection and 10,000-foot grid ticks: Texas coordinate system, central zone (Lambert conformal conic) 1000-meter Universal Transverse Mercator grid, zone 13 1927 North American datum

To place on the predicted North American Datum 1983 move the projection lines 14 meters south and 41 meters east as shown by dashed corner ticks

Fine red dashed lines indicate selected fence lines

10/19/2009

12.215 Lec 11

17

UTM coordinates

- Software for converting latitude and longitude to UTM coordinates is available at:
- <ftp://ftp.ngs.noaa.gov/pub/pcsoft/utms/>
- This software (available as PC executable and as Fortran source code) allows conversion to and from UTM and allows different ellipsoids to be used used
- NAD27 (most common on paper maps) use the Clarke 1866 ellipsoid while NAD83 (new North American Datum) using the WGS84 ellipsoid.

10/19/2009

12.215 Lec 11

18

Map Projection resources

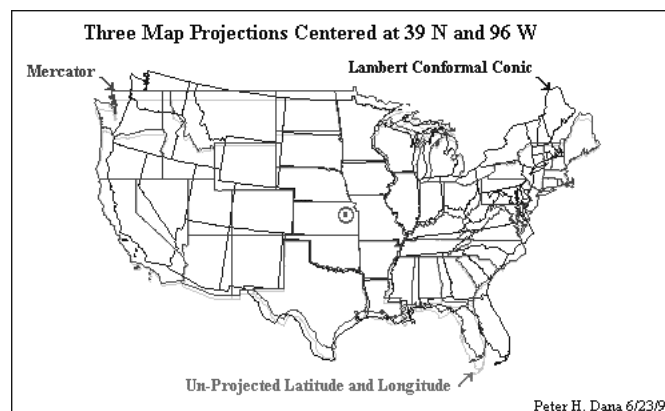
- Many web sites cover map projections. Some of the better ones are:
www.colorado.edu/geography/gcraft/notes/mapproj/mapproj_f.html
www.nationalgeographic.com/features/2000/exploration/projections/
- The mathematics involved in many projections can be found at
mathworld.wolfram.com/MapProjection.html
- If time permits these sites can be examined for content in class.

10/19/2009

12.215 Lec 11

19

North America under different projections



10/19/2009

12.215 Lec 11

20

Summary

- Examined different classes of map projections and the mathematics behind some of them
- When using a (paper) map, the important things to note are:
 - The ellipsoid used if an ellipsoidal projection
 - The nature of the projection itself